

London River Services

Map and information 2016/17



London.
Opened up by boat

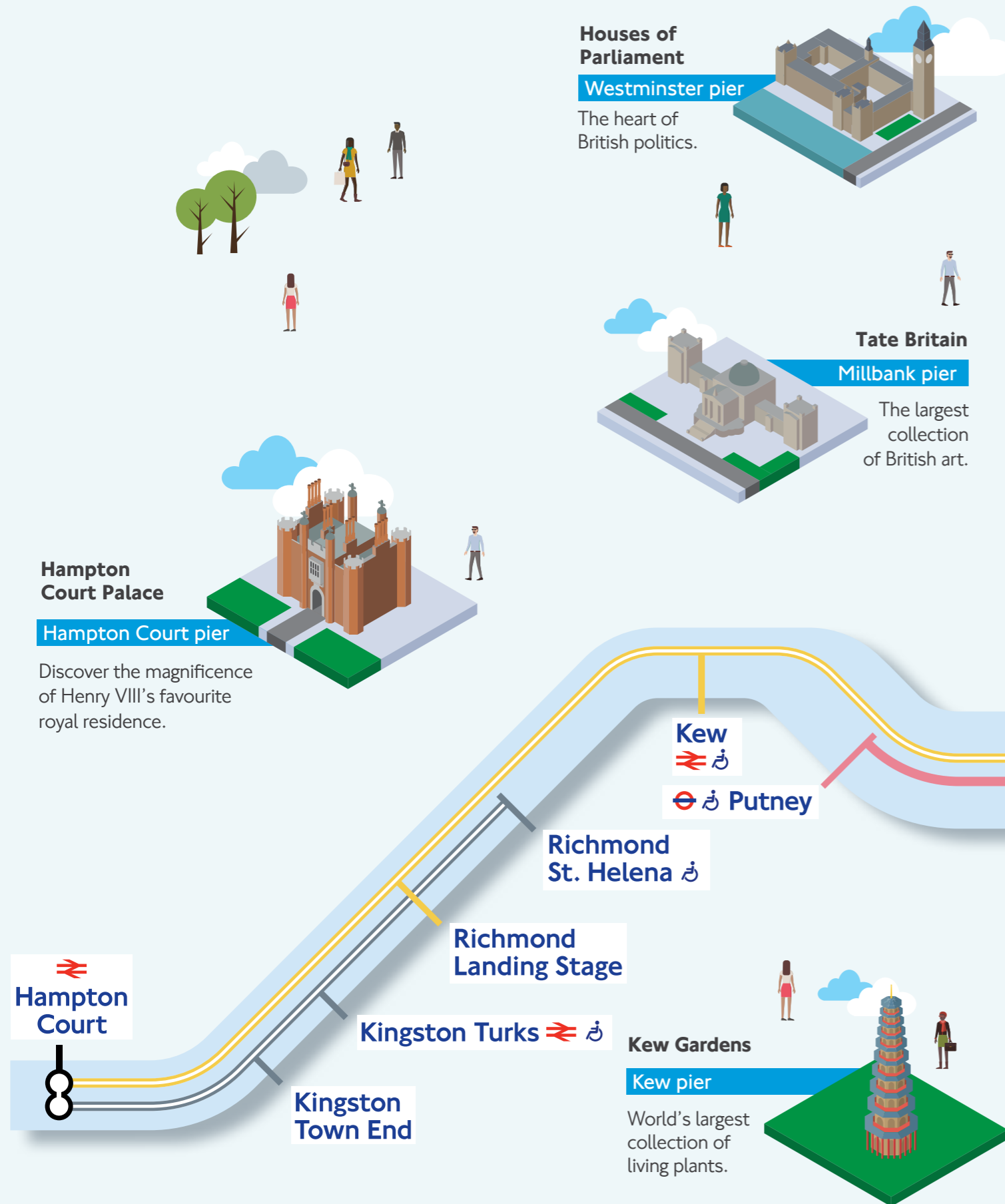


The River Thames plays a vital role as both an artery for transporting people through the heart of London and as a playground for people to explore the wonders of our city.

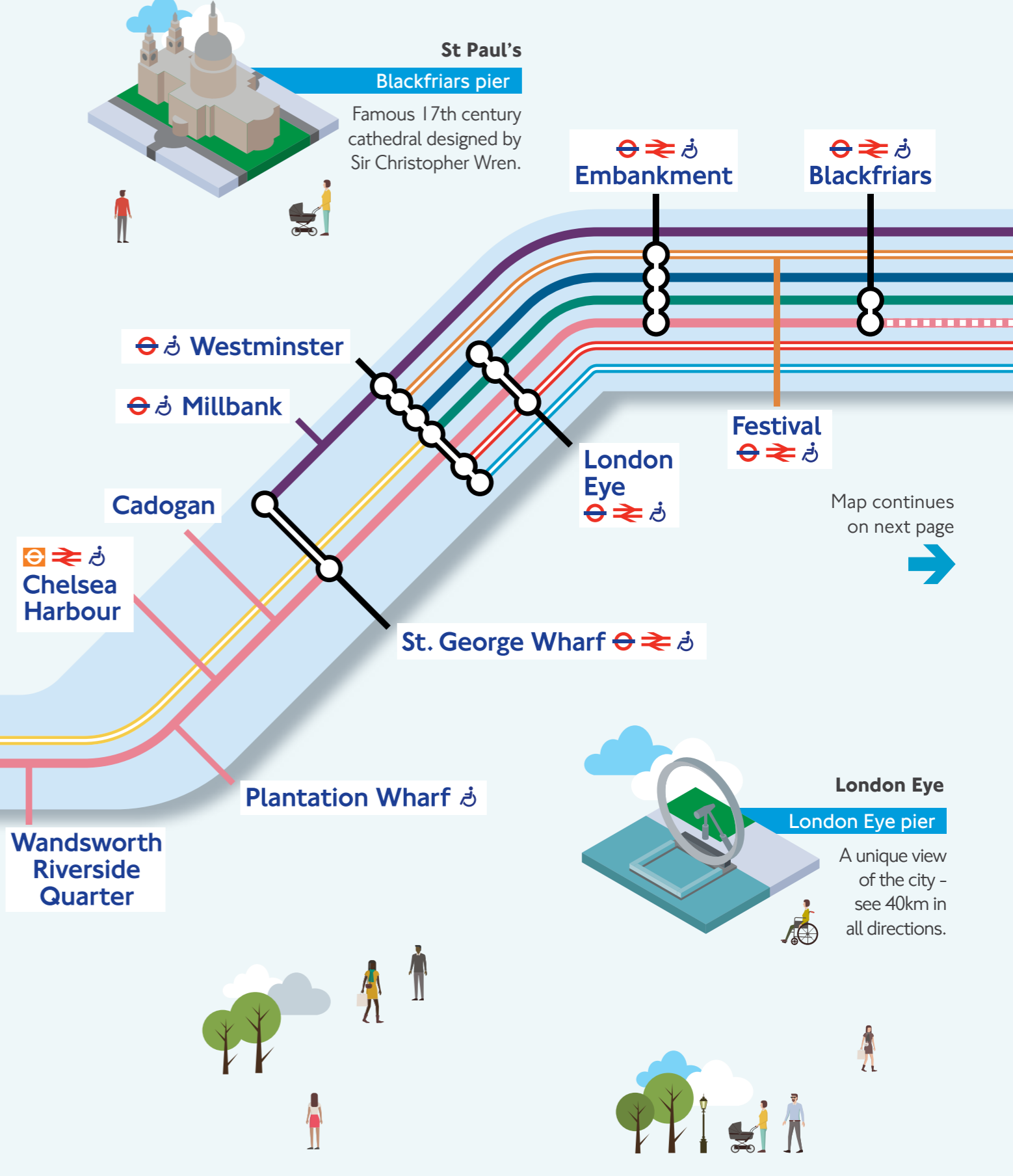
Travelling on the Thames is a fantastic experience that reveals 2,000 years of history whether you are commuting on the River Bus or are taking a leisurely River Tour.

We're making a raft of improvements to get more people on to the River and there's never been a better time to make the most of what London's greatest thoroughfare has to offer.

London River Services map



Map Key: London Underground London Overground National Rail Docklands Light Rail
 Emirates Air Line Step-free access from street to pier



Map continues on next page

London River Services map

The Tower of London

Tower pier

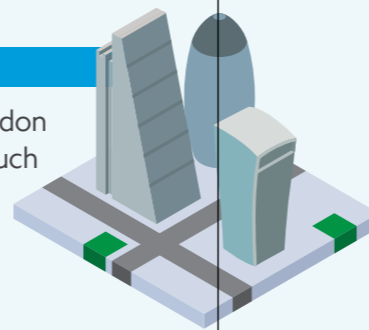
Home of the Crown Jewels.



The City

Tower pier

Oldest and historical part of London sits aside modern architecture such as The Gherkin.



Canary Wharf

Canary Wharf pier

Financial centre with some of Europe's tallest buildings.



Tower

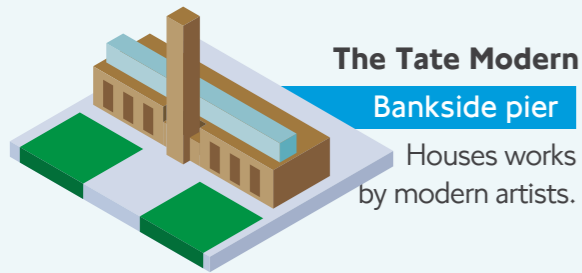
St. Katharine

Bankside

London Bridge City

Doubletree Docklands Nelson Dock

Canary Wharf



The Tate Modern

Bankside pier

Houses works by modern artists.

Greenland

Masthouse Terrace

The Shard

London Bridge City pier

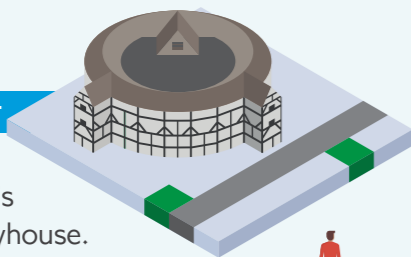
The tallest building in the UK.



The Globe

Bankside pier

Recreation of Shakespeare's Elizabethan playhouse.



Greenwich

North Greenwich

Woolwich Ferry North Terminal

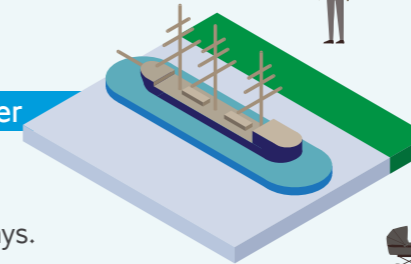
Woolwich Ferry South Terminal

Woolwich Royal Arsenal

Cutty Sark

Greenwich pier

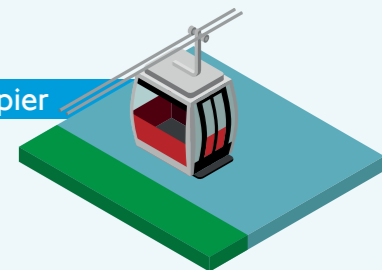
Sailed from Australia to London in 83 days.



Emirates Air Line

North Greenwich pier

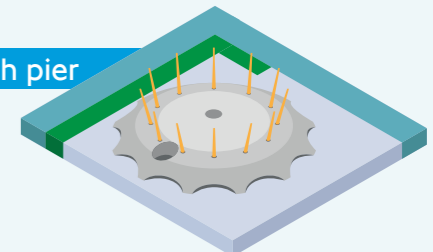
Cross the River Thames by cable car.



The O2 Arena

North Greenwich pier

The world's most popular music arena.



Map Key: London Underground London Overground National Rail DLR Docklands Light Rail Emirates Air Line Step-free access from street to pier



• A fast and frequent service • An alternative to the Tube or bus • Use your Oyster or contactless card to pay as you go • Fares discount with Travelcard

Service Key: ☕ Light snacks and drinks available 🚻 Toilet facilities available 🗣️ Live commentary (in English) 🎧 Multi-lingual recorded commentary 🚶 Step-free access from pier to boat 📄 1/3 Travelcard discount
 🔄 Use your Oyster or contactless card to pay as you go 💳 Use pay as you go on your Oyster card 🏢 to buy tickets at the pier ticket offices

RB1

Westminster to North Greenwich

Daily

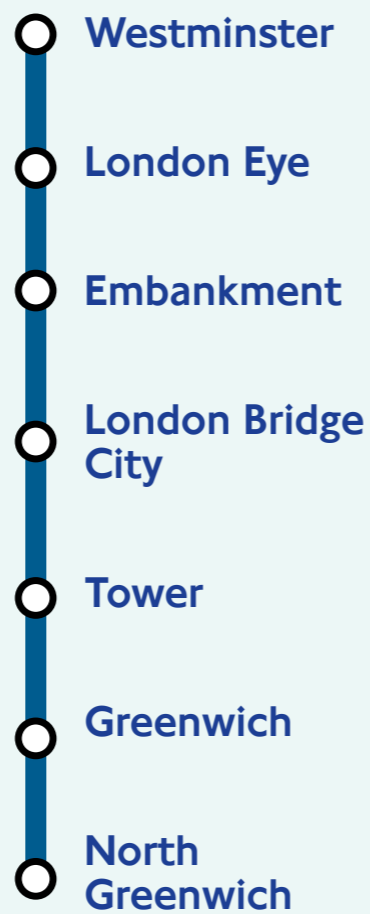
North Greenwich to Woolwich
Royal Arsenal Limited service



RBIX

Westminster to North Greenwich

Weekends only



RB4

Canary Wharf to Doubletree Docklands Nelson Dock

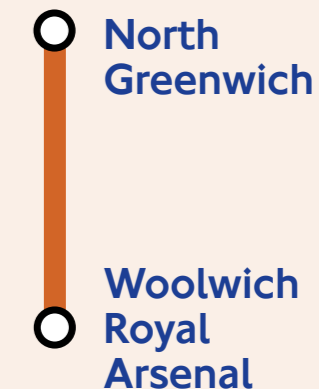
Daily



RB5

North Greenwich to Woolwich Royal Arsenal

Weekends only



RB6

Putney to Blackfriars

Monday to Friday peak hours and evenings (some boats also run to or from London Bridge City and Canary Wharf)



RB2

St. George Wharf to Bankside

Daily

(except early mornings and evenings)



For more information on all River Bus services visit thamesclippers.com



• A more leisurely cruise • Sightseeing commentary on most boats • Fares discount with Travelcard on selected services

Service Key: ☕ Light snacks and drinks available 🚻 Toilet facilities available 🗣️ Live commentary (in English) 🎧 Multi-lingual recorded commentary 🚶 Step-free access from pier to boat 💎 1/3 Travelcard discount
 🔄 Use your Oyster or contactless card to pay as you go 💳 Use pay as you go on your Oyster card 🏢 to buy tickets at the pier ticket offices

Circular Cruise Westminster

Westminster to St. Katharine circular cruise

circularcruise.co.uk
020 7936 2033



City Cruises

Westminster to Greenwich

citycruises.com
020 7740 0400



Thames River Services

Westminster to Greenwich

thamesriverservices.co.uk
020 7930 4097

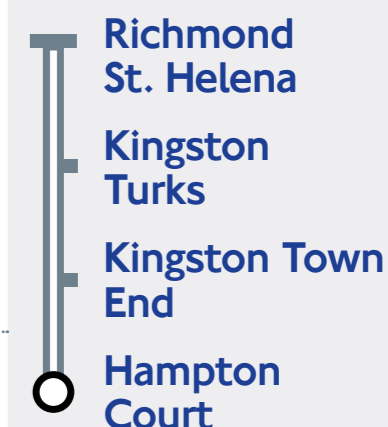


Turk Launches

Summer only service

Richmond St. Helena to Hampton Court

turks.co.uk
020 8546 2434



Thames River Boats

Summer only service

Westminster to Hampton Court

thamesriverboats.co.uk
0207 930 2062



Specialist cruises

Take a look overleaf for more cruise options. From an exciting speedboat experience to a delightful evening of dining, sightseeing and entertainment.



Circular Tours

London Eye River Cruise

London Eye Pier

A circular sightseeing cruise between the Houses of Parliament and Tower Bridge with live commentary from specialist guides.

40 minutes

londoneye.com

0333 321 2001



City Cruises Thames Circular

Tower Pier or Bankside Pier

See the heart of London on a circular cruise towards Westminster and back. Take in the fantastic views from the open deck with live commentary.

50 minutes

citycruises.com

020 7740 0400

Thames Sunday Evening Cruise

Greenwich Pier

A circular cruise taking you from Royal Greenwich into Central London passing London's iconic landmarks.

2 hours

viscountcruises.com

07973 678571



Speedboat Experience

Thamesjet

Westminster Pier

Sit back and enjoy some iconic sights, before high speed and aquabatics on a jet powered speedboat on the Thames.

thamesjet.com

020 7740 0400

Thames Rockets

London Eye Pier and St Katharine Pier

Expect a fast paced river adventure, behind the scenes stories, London gossip and exhilarating speed.

thamesrockets.com

020 7928 8933



Thames RIB Experience

Embankment Pier, Tower Pier and North Greenwich Pier

Experience an adrenaline rush as you pass London's breath taking sites at high speed with guided commentary.

thamesribexperience.com

0203 245 1177

Dining Cruises

Bateaux London

Embankment Pier

Lunch Cruise

Spectacular views, a seasonal three course set lunch and audio commentary.

1 hour 30 minutes

Sunday Lunch Jazz Cruise

A seasonal three course lunch with live entertainment performed by a jazz band.

2 hours 30 minutes

Afternoon Tea Cruise

A selection of sandwiches, pastries and scones, as well as an assortment of teas and musical delights from the resident solo pianist.

1 hour 15 minutes

Dinner Cruise

An evening cruise with superb live music, and freshly prepared modern British cuisine.

2 hours 45 minutes

bateauxlondon.com

020 7695 1800



Dining Cruises

City Cruises

Tower Pier

Lunch Cruise

Enjoy a delicious two course lunch while you sail through the heart of London.

1 hour 45 minutes

Afternoon Tea Cruise

A selection of delicious sandwiches, scones with clotted cream and jam, traditional cakes and unlimited tea or coffee.

1 hour 30 minutes

Westminster Pier

London Showboat Dinner Cruise

Live entertainment with performances from hit shows, as you enjoy a four-course evening dinner with wine.

3 hours

Sundowner Cruise

Sail off into the sunset with a glass of bubbly, canapes and live jazz.

2 hours

citycruises.com

020 7740 0400



Ways to pay

Paying for your travel on river services

Each boat operator has different fares. There are also different ways to pay for river journeys. Travelcards are not valid on any river services, but they do give you discounted fares on most services.

River Bus



Pay as you go

You can pay as you go using a contactless payment or Oyster card on MBNA Thames Clippers River Bus services. Pay as you go fares are cheaper than standard fares. These journeys do not count towards caps.

A zonal fares system is in place for River Bus services (west, central and east) and the fare you pay depends on the zones you travel through. A full fares table and River Bus route map can be found on the MBNA Thames Clippers website.

If you're using pay as you go, touch in on the yellow card reader when you're instructed to board the boat and remember to touch out at the end of your journey. This includes interchanges.

You can't top up at the piers, so if you're using Oyster please make sure you have enough pay as you go credit before you travel.



Paying for your travel on river services

Tickets

You can also buy tickets for MBNA Thames Clippers River Bus services in the following ways:

- In advance online from [thamesclippers.com](https://www.thamesclippers.com)
- On the go via the smartphone app [thamesclippers.com/app](https://www.thamesclippers.com/app)
- At pier ticket offices or self-service machines



River Tours

Tickets

You can purchase tickets for most River Tours at pier ticket offices and self-service machines.

Most River Tours operators also offer advance bookings online via their website and by telephone. Operator websites and telephone numbers can be found overleaf.

You can't use contactless or Oyster to pay as you go on River Tours, but you can use a contactless card or the credit on your Oyster card to buy a paper ticket from pier ticket offices for Thames River Services and Circular Cruise Westminster River Tours.

Discounts



Travelcards

You can get a third off MBNA Thames Clippers River Bus and most sightseeing River Tours if you have a Travelcard, whether it's a paper ticket or on your Oyster card.

If you are travelling on MBNA Thames Clippers services using Oyster to pay as you go and have a Travelcard on your Oyster card, the discounted fare will be charged when you touch in on the yellow card reader.

Child rates

Under 5's travel free on most services. Child fares apply, but age restrictions vary between operators so please check when buying your tickets



Students and Apprentices

NUS student card holders get a discount on some services. Check when you buy your ticket.

18+ Student and Apprentice Oyster photocard holders get a discount on MBNA Thames Clippers season tickets only.

Freedom Pass & senior citizen rates

Freedom Pass and 60+ Oyster card holders pay half the adult fare on MBNA Thames Clippers River Bus services and many River Tours.

Some operators offer senior citizen rates for those of pensionable age who do not have a Freedom Pass. Please check with the operator of the service when buying your ticket.





Most piers are suitable for wheelchair users and many boats are also step-free and have accessible toilets. However, some River Tour boats are not step-free and so we recommend you check with the boat operator before travelling.



If you would like to receive this guide in audio, large print or another language, please call on **0800 298 3009** or email at: **alternativeformats@k-international.com**

Please note that these formats are produced on demand, so your request may take a few weeks.



Emirates Air Line



London's cable car offers breathtaking panoramic views. Emirates Air Line crosses the River Thames between Greenwich Peninsula and the Royal Docks, just a five minute walk from North Greenwich Pier.
tfl.gov.uk/emiratesairline

Santander Cycles



Combine your river trip with a cycle around London. Santander Cycles, London's bike-sharing scheme, has many docking stations near piers. Bikes are allowed on board River Bus services.
tfl.gov.uk/santandercycles

Thinking of hiring a boat?

Many operators hire out boats or reserve areas for private parties.

For a list and contact details visit: tfl.gov.uk/river





tfl.gov.uk/18plus



24 hour travel information

0343 222 1234*



Sign up for email updates

tfl.gov.uk/emailupdates



[@TfLRiver](https://twitter.com/TfLRiver)

*Service and network charges may apply.
See tfl.gov.uk/callcharges for details.

TFL 32048.08.16